

"not able" or "NOTHING works" is not a useful problem description. ("NOTHING works", in particular, implies that you tried EVERYTHING, which seems unlikely.) It does not say what you did. It does not say what happened when you did it. As usual, showing actual actions (commands) with their actual results (error messages, LED indicators, ...) can be more helpful than vague descriptions or interpretations.

Here are some "Commands with actual results":

### 1- Ipconfig with NO Wifi and R7000P connected through ethernet

```
C:\Users\josem>ipconfig

Windows IP Configuration

Ethernet adapter Ethernet:

    Connection-specific DNS Suffix  . : 
    Link-local IPv6 Address . . . . . : fe80::cddd:14f:8142:eb19%18
    IPv4 Address. . . . . : 192.168.1.10
    Subnet Mask . . . . . : 255.255.255.0
    Default Gateway . . . . . : 192.168.1.1

Wireless LAN adapter Local Area Connection* 2:

    Media State . . . . . : Media disconnected
    Connection-specific DNS Suffix  . : 

Wireless LAN adapter Local Area Connection* 3:

    Media State . . . . . : Media disconnected
    Connection-specific DNS Suffix  . : 

Ethernet adapter Bluetooth Network Connection 2:

    Media State . . . . . : Media disconnected
    Connection-specific DNS Suffix  . : 

Wireless LAN adapter Wi-Fi:

    Media State . . . . . : Media disconnected
    Connection-specific DNS Suffix  . :
```


### 2- Active networks:

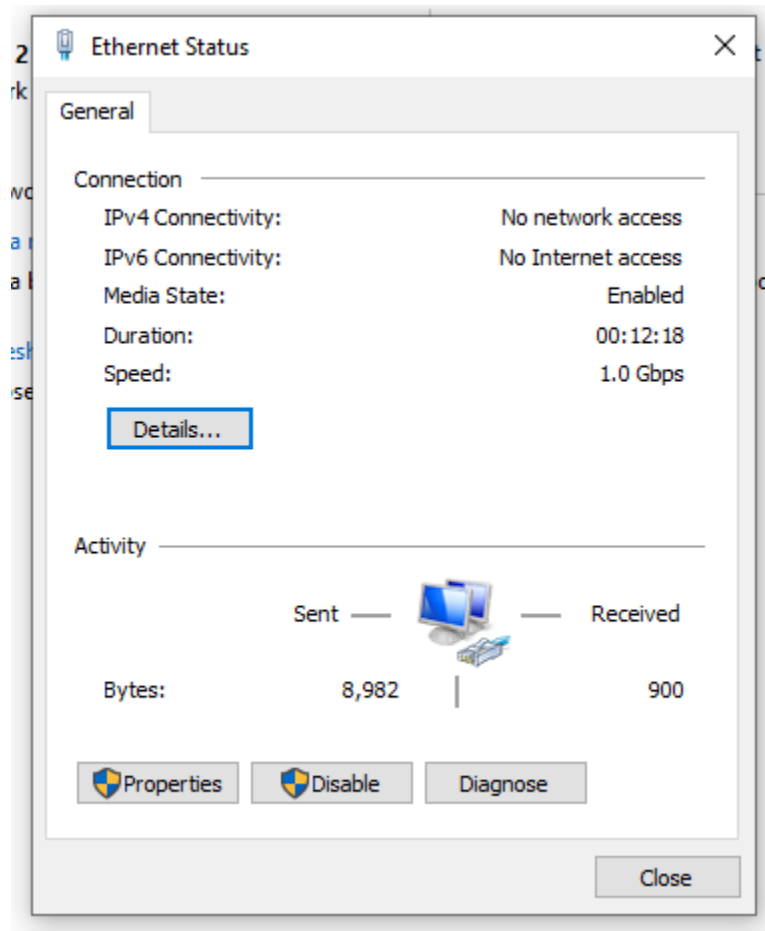
## View your basic network information and set up connections

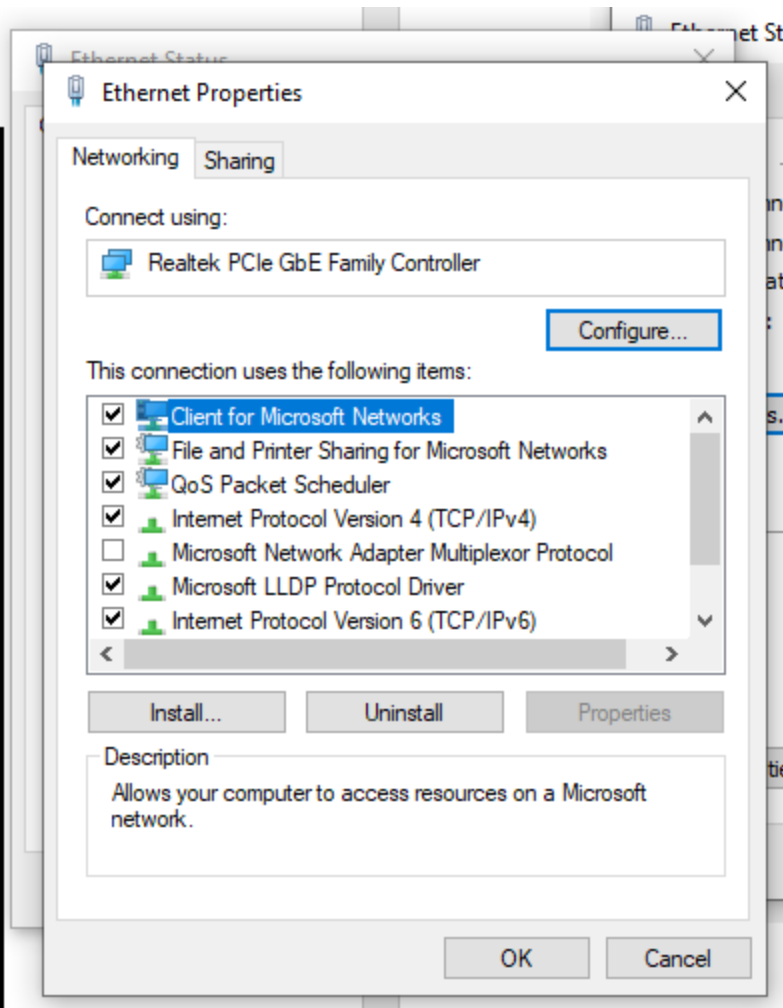
View your active networks

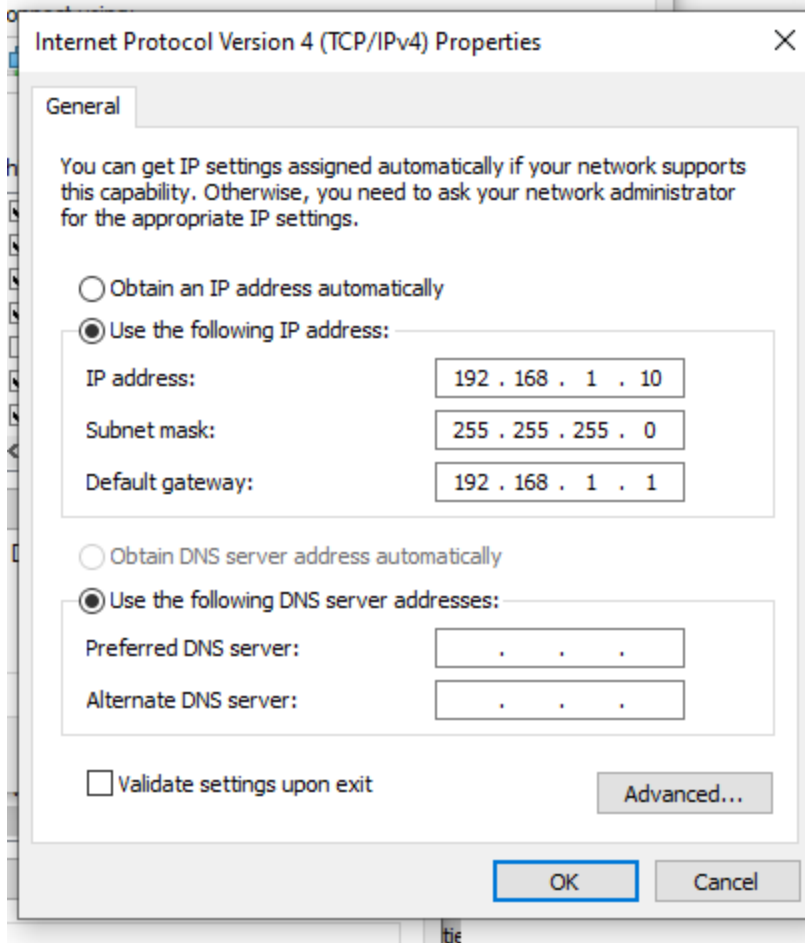
**NETGEAR09 2**  
Public network

Access type: No Internet access

Connections:  Ethernet







### 3- Ping's

192.168.1.10

```
C:\Users\josem\Desktop>ping 192.168.1.10

Pinging 192.168.1.10 with 32 bytes of data:
Reply from 192.168.1.10: bytes=32 time<1ms TTL=128
Reply from 192.168.1.10: bytes=32 time<1ms TTL=128
Reply from 192.168.1.10: bytes=32 time<1ms TTL=128
Reply from 192.168.1.10: bytes=32 time<1ms TTL=128

Ping statistics for 192.168.1.10:
    Packets: Sent = 4, Received = 4, Lost = 0 (0% loss),
    Approximate round trip times in milli-seconds:
        Minimum = 0ms, Maximum = 0ms, Average = 0ms
```

192.168.0.1

```
C:\Users\josem\Desktop>ping 192.168.0.1

Pinging 192.168.0.1 with 32 bytes of data:
Reply from 192.168.1.10: Destination host unreachable.
Request timed out.
Reply from 192.168.1.10: Destination host unreachable.
Request timed out.

Ping statistics for 192.168.0.1:
    Packets: Sent = 4, Received = 2, Lost = 2 (50% loss),
```

192.168.1.1

```
C:\Users\josem\Desktop>ping 192.168.1.1

Pinging 192.168.1.1 with 32 bytes of data:
Request timed out.
Request timed out.
Request timed out.
Request timed out.

Ping statistics for 192.168.1.1:
    Packets: Sent = 4, Received = 0, Lost = 4 (100% loss),
```

192.168.132.1

```
Pinging 192.168.132.1 with 32 bytes of data:
Reply from 192.168.1.10: Destination host unreachable.
Request timed out.
Request timed out.
Request timed out.

Ping statistics for 192.168.132.1:
    Packets: Sent = 4, Received = 1, Lost = 3 (75% loss),
```

192.168.132.140

```
C:\Users\josem\Desktop>ping 192.168.132.140

Pinging 192.168.132.140 with 32 bytes of data:
Reply from 192.168.132.140: bytes=32 time<1ms TTL=128
Reply from 192.168.132.140: bytes=32 time<1ms TTL=128
Reply from 192.168.132.140: bytes=32 time<1ms TTL=128
Reply from 192.168.132.140: bytes=32 time<1ms TTL=128

Ping statistics for 192.168.132.140:
    Packets: Sent = 4, Received = 4, Lost = 0 (0% loss),
    Approximate round trip times in milli-seconds:
        Minimum = 0ms, Maximum = 0ms, Average = 0ms
```

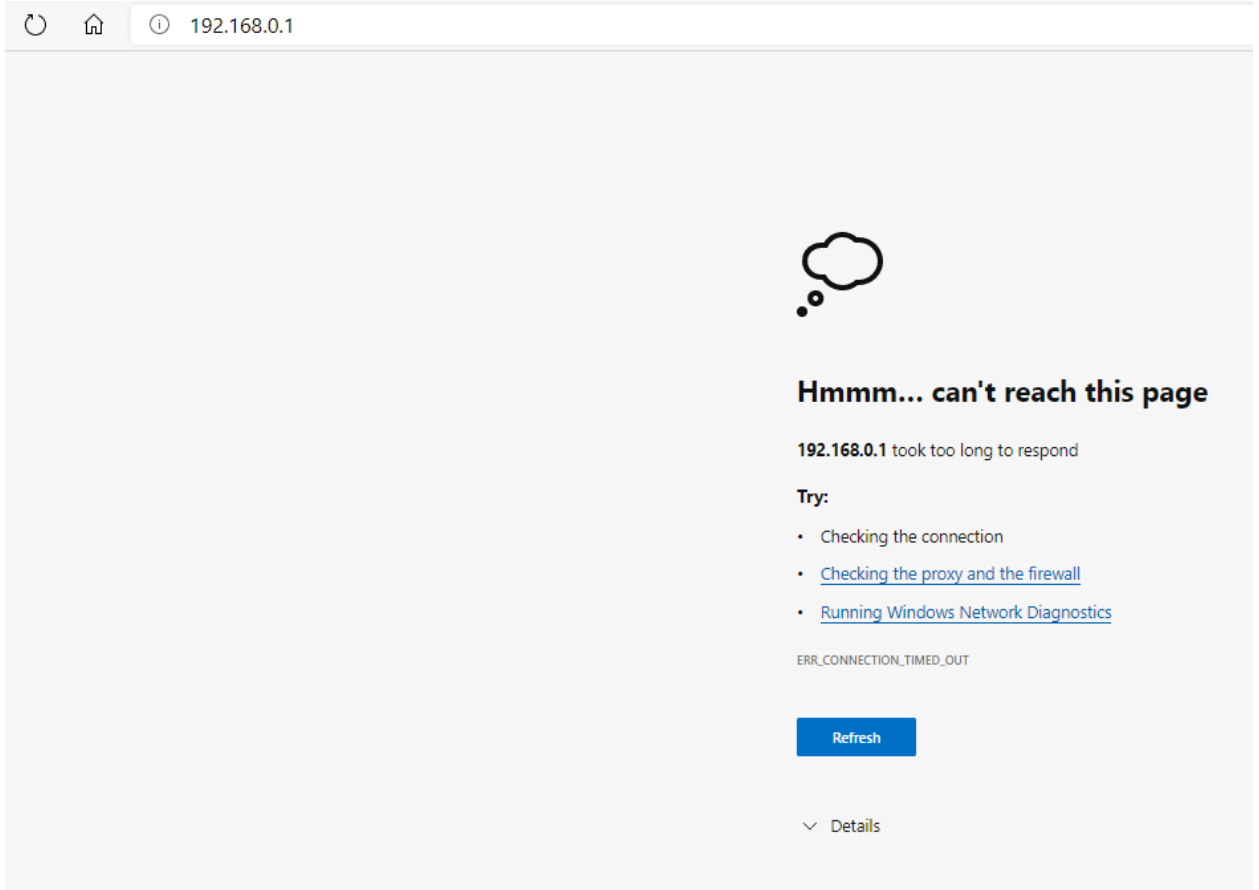
#### 4- TFTP

```
C:\Users\josem\Desktop>tftp -i 192.168.132.1 put R7000P-V1.3.1.64_10.1.36.chk
Connect request failed
```

```
C:\Users\josem\Desktop>tftp -i 192.168.0.1 put R7000P-V1.3.1.64_10.1.36.chk
Connect request failed
```


```
C:\Users\josem\Desktop>tftp -i 192.168.132.140 put R7000P-V1.3.1.64_10.1.36.chk
Connect request failed
```

## 5- Web browser



The screenshot shows a web browser window with a light gray background. At the top, there is a navigation bar with a refresh icon, a home icon, and an address bar containing the IP address "192.168.0.1". The main content area is mostly empty, with a large thought bubble icon on the right side. Below the icon, the text reads "Hmmm... can't reach this page". Underneath, it says "192.168.0.1 took too long to respond". A "Try:" section follows, listing three items: "Checking the connection", "[Checking the proxy and the firewall](#)", and "[Running Windows Network Diagnostics](#)". Below this list, the error code "ERR\_CONNECTION\_TIMED\_OUT" is displayed. At the bottom right, there is a blue "Refresh" button and a "Details" link with a downward arrow.

192.168.0.1



### Hmmm... can't reach this page

192.168.0.1 took too long to respond

**Try:**

- Checking the connection
- [Checking the proxy and the firewall](#)
- [Running Windows Network Diagnostics](#)

ERR\_CONNECTION\_TIMED\_OUT

[Refresh](#)

Details



192.168.1.1



## Hmmm... can't reach this page

192.168.1.1 took too long to respond

### Try:

- Checking the connection
- [Checking the proxy and the firewall](#)
- [Running Windows Network Diagnostics](#)

ERR\_CONNECTION\_TIMED\_OUT

Refresh

∨ Details





192.168.132.1



## Hmmm... can't reach this page

192.168.132.1 took too long to respond

### Try:


- Checking the connection
- [Checking the proxy and the firewall](#)
- [Running Windows Network Diagnostics](#)

ERR\_CONNECTION\_TIMED\_OUT

Refresh

∨ Details

www.routerlogin.net



### Hmmm... can't reach this page

www.routerlogin.net's server IP address could not be found.

**Try:**


- [Checking the connection](#)
- [Checking the proxy, firewall, and DNS settings.](#)
- [Running Windows Network Diagnostics](#)

ERR\_NAME\_NOT\_RESOLVED

[Refresh](#)

Details

www.expressvpnrouter.com



### Hmmm... can't reach this page

www.expressvpnrouter.com's server IP address could not be found.

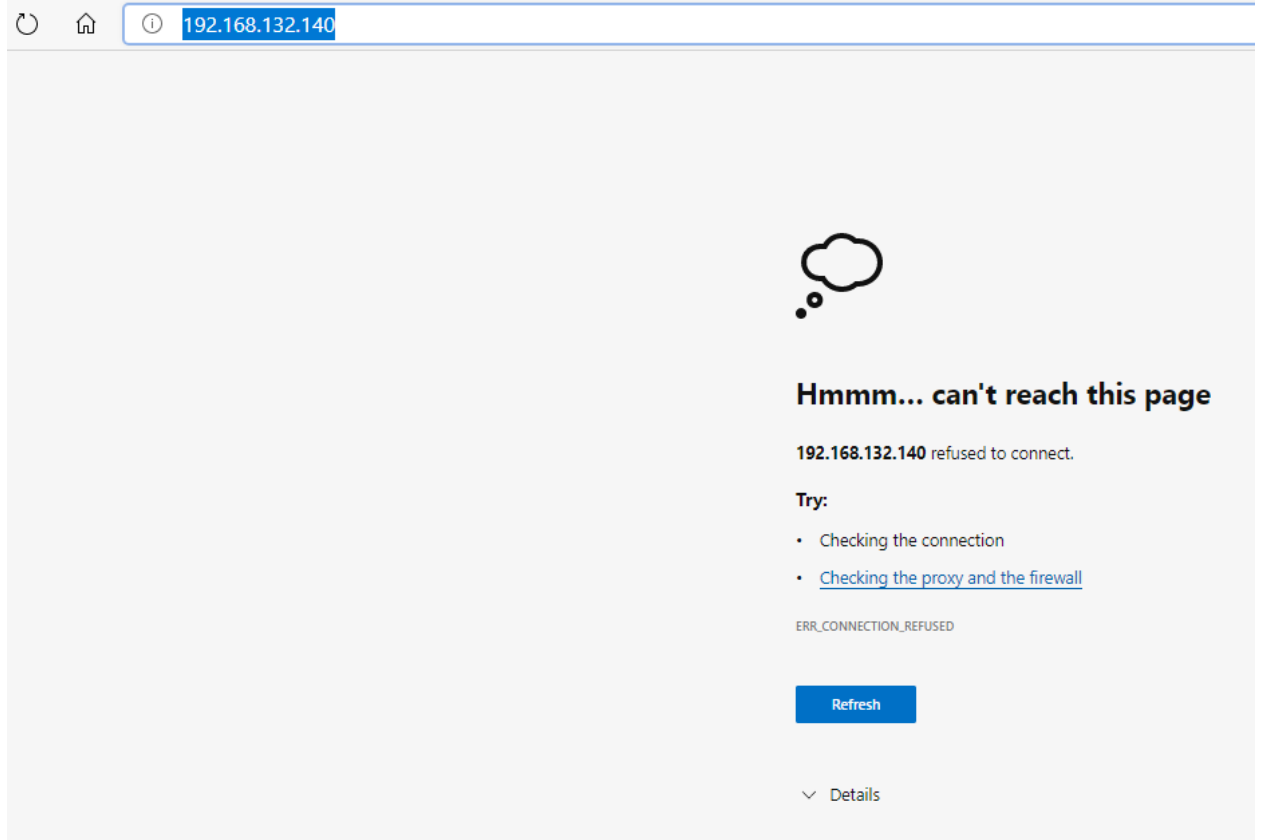
**Try:**

- [Checking the connection](#)
- [Checking the proxy, firewall, and DNS settings.](#)
- [Running Windows Network Diagnostics](#)

ERR\_NAME\_NOT\_RESOLVED

[Refresh](#)

Details



## 6- Router lights

Those are the lights I get immediately after turning on, they stay like that for about 30-60 seconds



Then I am able to connect to wifi but without any internet connection nor able to access router admin.




7- "Broken" router wifi settings when connected:


[View your basic network information and set up connections](#)

View your active networks

**NETGEAR94**  
Private network

Access type: No Internet access  
Connections:  Wi-Fi (NETGEAR94)


**NETGEAR09 2**  
Public network

Access type: No Internet access  
Connections:  Ethernet

**Wi-Fi Status** [Close]



**General**

**Connection**

IPv4 Connectivity:	No Internet access
IPv6 Connectivity:	No Internet access
Media State:	Enabled
SSID:	NETGEAR94
Duration:	00:01:04
Speed:	150.0 Mbps
Signal Quality:	

[Details...](#) [Wireless Properties](#)

**Activity**

Sent		Received
Bytes: 13,251		3,504

[Properties](#) [Disable](#) [Diagnose](#)

[Close](#)

Internet Protocol Version 4 (TCP/IPv4) Properties



General **Alternate Configuration**

You can get IP settings assigned automatically if your network supports this capability. Otherwise, you need to ask your network administrator for the appropriate IP settings.

Obtain an IP address automatically

Use the following IP address:

IP address:

Subnet mask:

Default gateway:

Obtain DNS server address automatically

Use the following DNS server addresses:

Preferred DNS server:

Alternate DNS server:

Validate settings upon exit

Advanced...

OK

Cancel

```
C:\Users\josem\Desktop>ipconfig
```

```
Windows IP Configuration
```

```
Ethernet adapter Ethernet:
```

```
Connection-specific DNS Suffix . :  
Link-local IPv6 Address . . . . . : fe80::cddd:14f:8142:eb19%18  
IPv4 Address. . . . . : 192.168.1.10  
Subnet Mask . . . . . : 255.255.255.0  
Default Gateway . . . . . : 192.168.1.1
```

```
Wireless LAN adapter Local Area Connection* 2:
```

```
Media State . . . . . : Media disconnected  
Connection-specific DNS Suffix . :
```

```
Wireless LAN adapter Local Area Connection* 3:
```

```
Media State . . . . . : Media disconnected  
Connection-specific DNS Suffix . :
```

```
Wireless LAN adapter Wi-Fi:
```

```
Connection-specific DNS Suffix . :  
Link-local IPv6 Address . . . . . : fe80::c890:1f52:f272:5e22%10  
IPv4 Address. . . . . : 192.168.132.140  
Subnet Mask . . . . . : 255.255.255.0  
Default Gateway . . . . . : 192.168.132.1
```

```
Ethernet adapter Bluetooth Network Connection 2:
```

```
Media State . . . . . : Media disconnected  
Connection-specific DNS Suffix . :
```