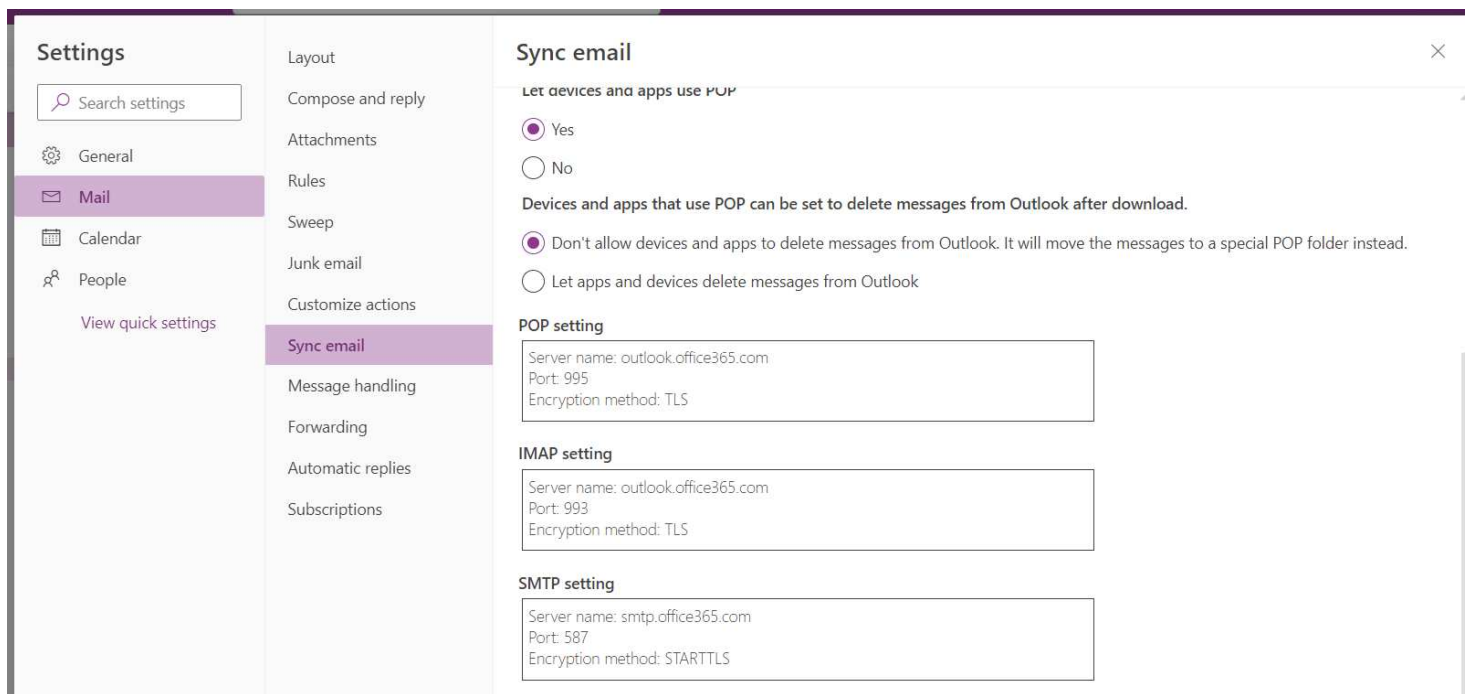


## From Settings in my Outlook.live.com



The screenshot shows the Outlook settings interface. On the left, a sidebar lists various settings categories: Settings, Search settings, General, Mail (selected), Calendar, People, and View quick settings. The main content area is titled 'Sync email' and contains three sections: 'Let devices and apps use POP', 'POP setting', 'IMAP setting', and 'SMTP setting'. The 'Let devices and apps use POP' section has two radio buttons: 'Yes' (selected) and 'No'. Below this, there is a note: 'Devices and apps that use POP can be set to delete messages from Outlook after download.' and two more radio buttons: 'Don't allow devices and apps to delete messages from Outlook. It will move the messages to a special POP folder instead.' (selected) and 'Let apps and devices delete messages from Outlook'. The 'POP setting' section shows: Server name: outlook.office365.com, Port: 995, Encryption method: TLS. The 'IMAP setting' section shows: Server name: outlook.office365.com, Port: 993, Encryption method: TLS. The 'SMTP setting' section shows: Server name: smtp.office365.com, Port: 587, Encryption method: STARTTLS.

## From Query on Google about Outlook settings

You can use Outlook to read and send mail from Yahoo, Gmail, Hotmail, and other email accounts. If you want to manually add another email account to Outlook, you may need to use advanced setup. See [Add an email account to Outlook](#).

You'll need your email provider's incoming server settings (POP or IMAP) and outgoing server settings (SMTP). Here's a list of those settings for several email providers. If you don't see yours listed here, ask your email provider to give them to you.

Email Provider	IMAP Settings	POP Settings	SMTP Settings
Microsoft 365 Outlook Hotmail Live.com	Server: outlook.office365.com Port: 993 Encryption: SSL/TLS	Server: outlook.office365.com Port: 995 Encryption: SSL/TLS	Server: smtp.office365.com Port: 587 Encryption: STARTTLS
MSN	Server: imap-mail.outlook.com Port: 993 Encryption: SSL/TLS	Server: pop-mail.outlook.com Port: 995 Encryption: SSL/TLS	Server: smtp-mail.outlook.com Port: 587 Encryption: STARTTLS

## From my Outlook 2016 settings on laptop

### Account Information

POP Account Settings  
[redacted]@outlook.com

**Incoming mail**

User name [redacted]@outlook.com  
Password [redacted]  
 Remember password

Server outlook.office365.com Port 995

This server requires an encrypted connection (SSL/TLS)  
 Require logon using Secure Password Authentication (SPA)

**Outgoing mail** ▾

Next

### Account Information

POP Account Settings  
[redacted]@outlook.com

**Incoming mail** ▾

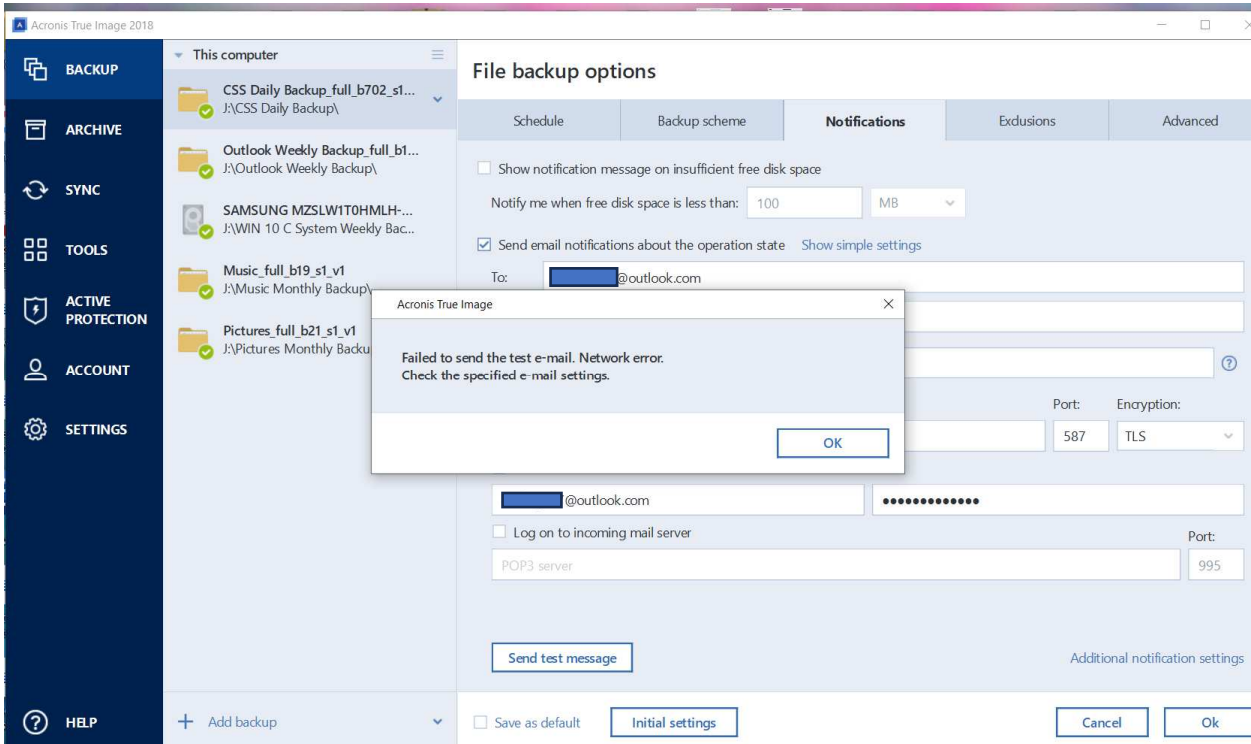
**Outgoing mail**

Server smtp.office365.com Port 587  
Encryption method STARTTLS ▾  
Server timeouts [slider]

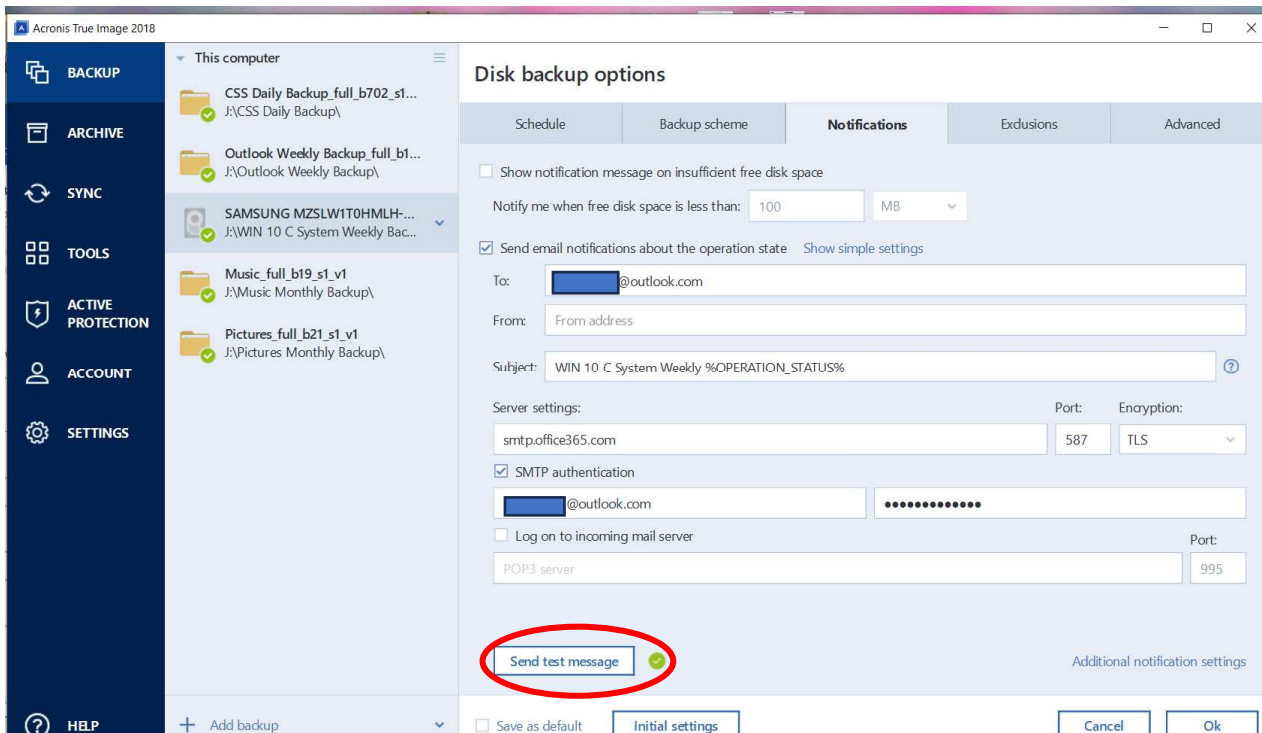
Require logon using Secure Password Authentication (SPA)  
 My outgoing (SMTP) server requires authentication  
 Use same settings as my incoming mail server  
 Log on using user name and password  
 Log on to incoming mail server before sending mail

Next

## Email settings in Acronis (backup) - Test email from CSS Daily Backup failed to send



## Test email from System Weekly backup sent test message fine w/same settings



Tested Send/Receive in Outlook 2016 – was failing as well, when I finally sent/received successfully I retried sending the test message from CSS Daily Backup (with no setting changes) and it sent ok.

